

Isle of Man Ship Registry Technical Advisory Notice

COSMO MED and Type Approved Fire Doors – Faulty A60, A0 and B15 Fire doors

Ref. 007-17
Issued 30/08/2017

The Issue

The Ship Registry has been kindly informed by the UK Maritime and Coastguard Agency that an issue has been found with some fire doors manufactured by **COSMO Co. Ltd.**

COSMO Fire doors of A60, A0 and B15 standard that have been type approved and are certified to MED Modules B and D by DNV-GL, produced between November 2013 and July 2017 might be affected by this issue.

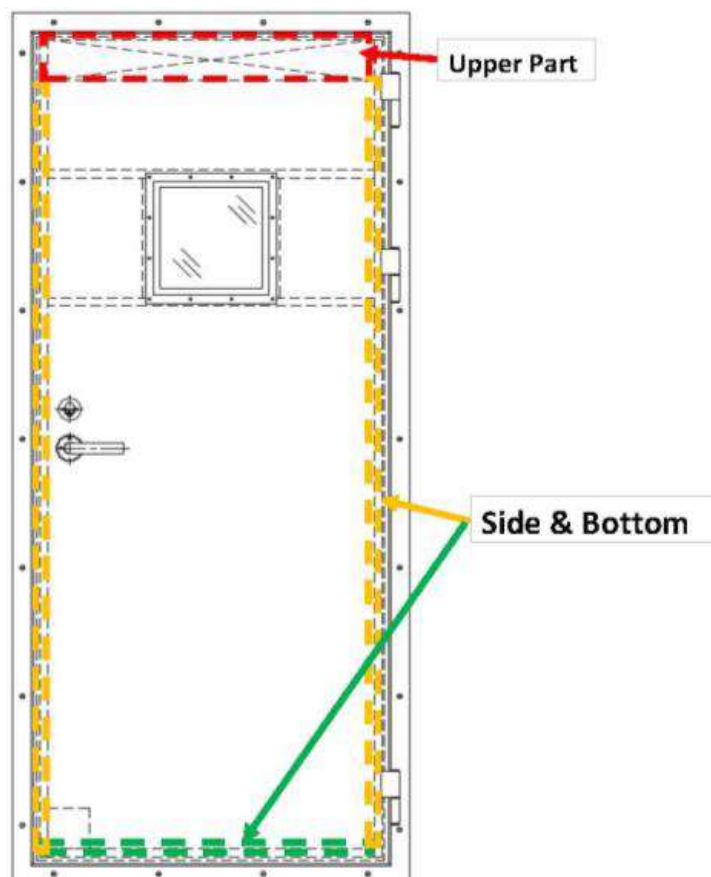


Figure 1: Affected areas of COSMO fire doors

It has come to light that the insulation in these doors is missing from the upper part, sides and bottom of the doors, the areas in which the insulation is missing is shown in Figure 1. This is likely to have occurred during a change of work process when new equipment was introduced in November 2013.

The fire doors affected have been found to fail on the insulation performance criteria requirement of the IMO FTP Code Part 3.



Actions to take

COSMO have devised a test to determine if the doors are affected or not, which can be conducted without destruction or removal of the doors.

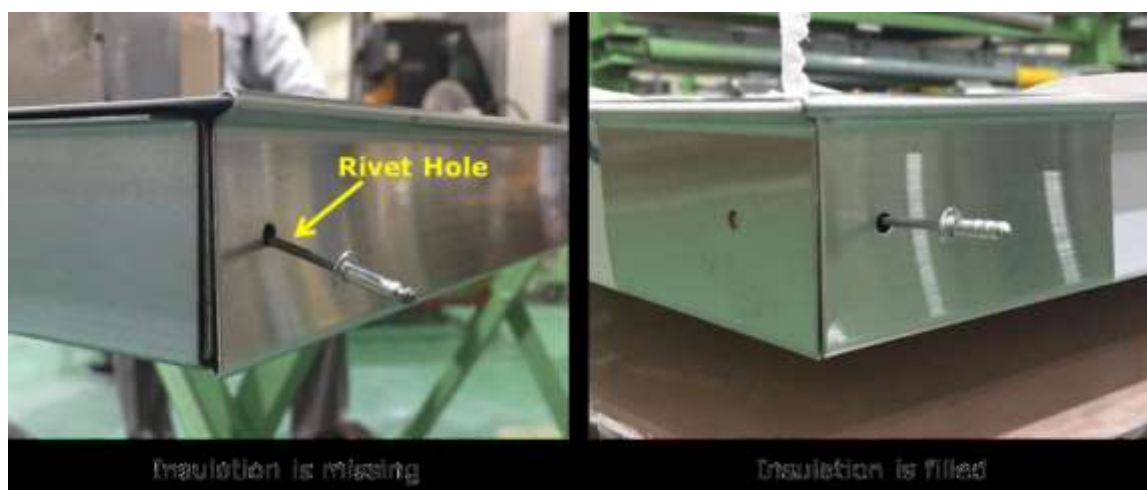


Figure 2: How to check COSMO fire doors to identify if insulation is missing (left) or if insulation present (right)

How to check if your COSMO Fire doors are affected;

1. Remove a rivet or hinge bolt from the side of the door.
2. Insert a metal pin through this rivet/bolt hole, and check for missing insulation.
3. If a door is found to be missing insulation, please inform COSMO at: COSMO CO., LTD. 20, Myeongnyesandan 2-ro, Jangan-eup, Gijang-gun, Busan, Korea Tel: +82 51 519 9900, Fax: +82 51 519 9900 www.bn-cosmo.com

COSMO with support from DNV-GL is now working towards a solution to the problem that will be informed to affected parties. If evidence of these faulty doors is discovered then in addition to contacting COSMO, please contact us at marine.survey@gov.im and also your vessels' Classification Society.

Owners and operators of affected Isle of Man registered vessels should take temporary mitigating measures in the form of regular fire watch/fire patrols, added precautions in case of hot work, pay attention to good housekeeping and to arrange fire hoses so that they are readily available near the affected doors in the interim period, considering the small increase in risk to the safety of the vessel.

Please note - The Isle of Man Ship Registry cannot give legal advice. Where this document provides guidance on the law it should not be regarded as definitive. The way the law applies to any particular case can vary according to circumstances - for example, from vessel to vessel. You should consider seeking independent legal advice if you are unsure of your own legal position.



